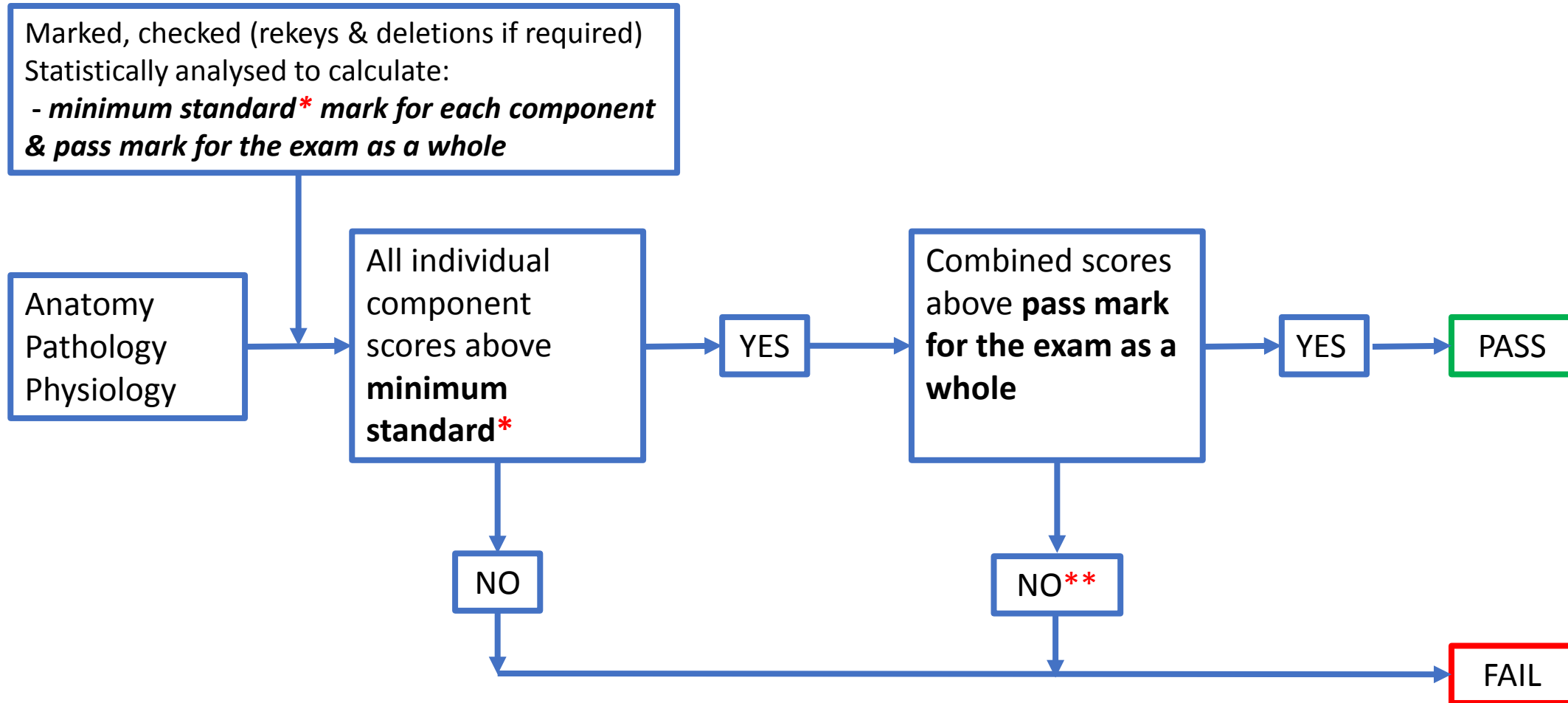


PASSING THE GENERIC SURGICAL SCIENCES EXAMINATION (GSSE)



* – the **minimum standard score** represents the lowest score in a component which can be off-set / compensated for by higher scores in other components

** – if the combined score is within one error width of the pass mark the candidate may be elevated to a pass if:

1. Achieved on a second sitting OR
2. Special considerations are accepted (see [Special Consideration Process Map](#))